



Sovereign Court, Sunningdale

£1,200 pcm



Sovereign Court, Halfpenny Lane, Sunningdale SL5 0HH

A two bedroom ground floor apartment located in the centre of Sunningdale with its variety of shops, cafes and restaurants and just a short walk from the mainline train station and Waitrose.

NB Unfortunately pets and commercial vehicles/vans are not allowed.

FEATURES

Ground floor
Short walk to Sunningdale Station
Electric heating

ACCOMODATION

Entrance hall
Sitting/dining room
Kitchen with appliances
Bathroom

OUTSIDE

Allocated parking space
Visitor spaces

EPC RATING

C

COUNCIL TAX

RBWM – Band D

DEPOSIT PAYABLE

£1,380

FURNISHED/UNFURNISHED

Unfurnished

AVAILABLE

February 1st 2024





Approximate Gross Internal Area
49.20 sq m / 530 sq ft

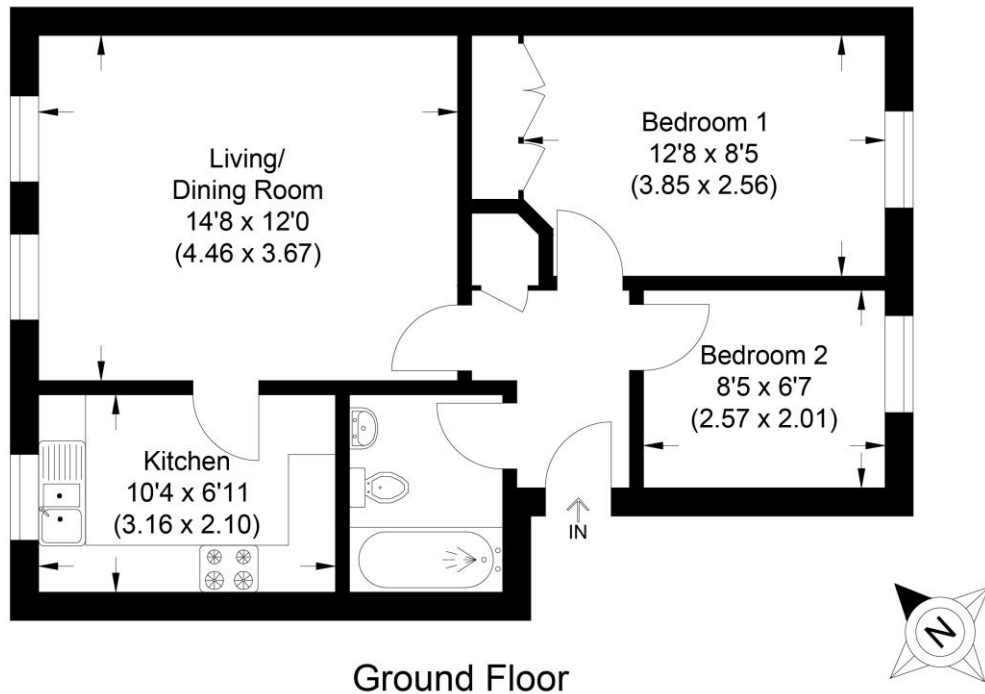


Illustration for identification purposes only, measurements are approximate, not to scale.

Disclaimer: We wish to inform prospective purchasers that we have prepared these sales particulars as a general guide. We have not carried out a detailed survey, nor tested the services, appliances and specific fittings. Room sizes are approximate and rounded; they are taken between internal wall surfaces and therefore include cupboards / shelves, etc. Accordingly, they should not be relied upon for carpeting, curtains / blinds and kitchen equipment, whether fitted or not, are deemed removable by the vendor unless specifically itemized within these.

Postcode for sat nav: SL5 0HH




NEWTON ROWE
SALES & LETTINGS

The Old Dairy, 7 Updown Hill, Windlesham, Surrey GU20 6AF
enquiries@newtonrowe.co.uk | 01276 986900